



## Sewer Line Diagnostic OrGanizer (SL-DOG) v3 Installation and Quick Start Guide for Local Client

This guide provides instructions to install the necessary software and drivers to download data from the Sewer Line Rapid Assessment Tool (SL-RAT).

### Items needed:

- PC with Windows installed (XP, 7 or 8)
- USB cable (provided with SL-RAT)
- SL-DOG Installation CD (provided with SL-RAT)
- Active internet connection

### Step 1 – Install USB drivers

Place the SL-DOG cd in the computer and browse to the "USB Drivers" directory.

Run the "CDM20824\_Setup.exe" program to install the USB drivers (shown below).

Name	Date modified	Type	Size
CDM 2.08.24 WHQL Certified	9/17/2013 12:37 AM	File folder	
CDM20824_Setup.exe	6/15/2012 12:05 AM	Application	1,703 KB

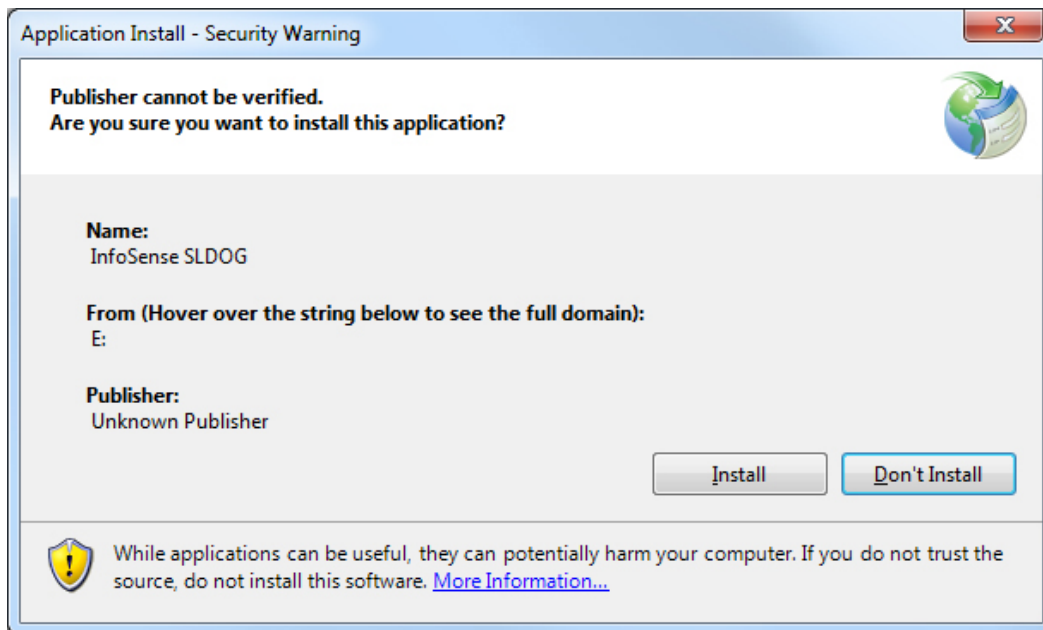
Windows may ask for permission to do this, and a command prompt may also appear during the installation. Once the installation is complete, proceed to Step 2.

### Step 2 – Install the SL-DOG software

From the root directory of the CD, run the "setup.exe", shown below.

Name	Date modified	Type	Size
Application Files	11/2/2013 4:07 AM	File folder	
dotNetFx40	9/17/2013 12:36 AM	File folder	
USB drivers	9/17/2013 12:36 AM	File folder	
InfoSense SLDOG.application	11/2/2013 3:27 AM	ClickOnce Applica...	6 KB
Quick Start Guide 12-26-12.pdf	1/3/2013 5:19 PM	PDF File	308 KB
setup.exe	11/2/2013 3:27 AM	Application	461 KB
SL_RAT_UserManual_1.13.2013v2.pdf	8/6/2013 12:09 PM	PDF File	1,942 KB
sldog.htm	11/2/2013 3:27 AM	HTML Document	8 KB
SL-RAT quickstart guide 6-2-13.pdf	11/13/2013 2:48 PM	PDF File	364 KB
SL-RAT Warranty Card 5-31-13.pdf	7/23/2013 2:24 PM	PDF File	276 KB

The following screen should appear:



Choose the "Install" button. The software may automatically run after installation, you can leave it open or close it.

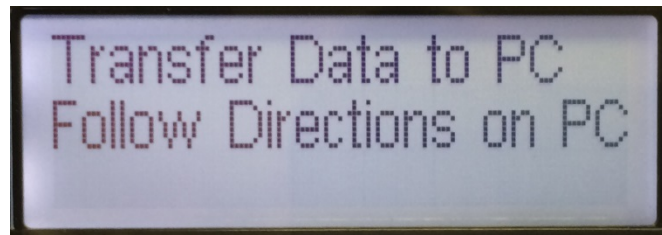
You may now remove the installation CD.

### Step 3 – Attach the SL-RAT RX unit to the computer

Turn the SL-RAT RX unit on, and plug in the USB cable. The USB port is located on the bottom of the SL-RAT RX unit, shown in the figure below.

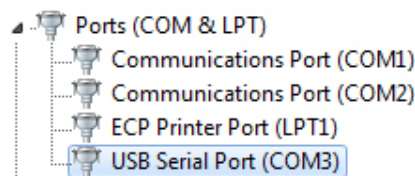


The display screen on the SL-RAT should show the following:



If this is the first time you've connected the SL-RAT to this particular computer, the drivers will install. This could take several minutes.

**Optional check on driver status:** If you look under the "Device Manager" (selected from the Control Panel within Windows), you should see a "USB Serial Port" with an assigned COM port number.



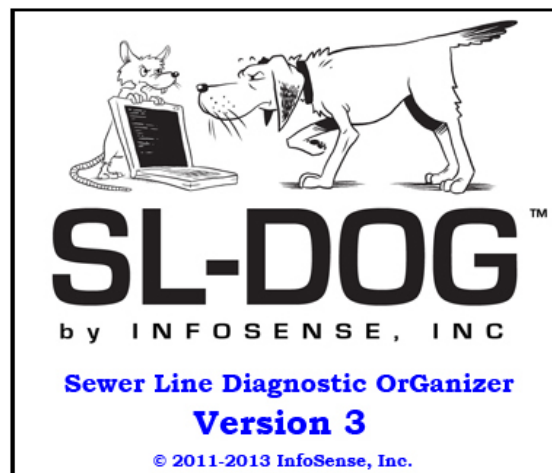
## Step 4 – Run the SL-DOG software

The installation software should have placed an icon on your desktop for the SL-DOG software.

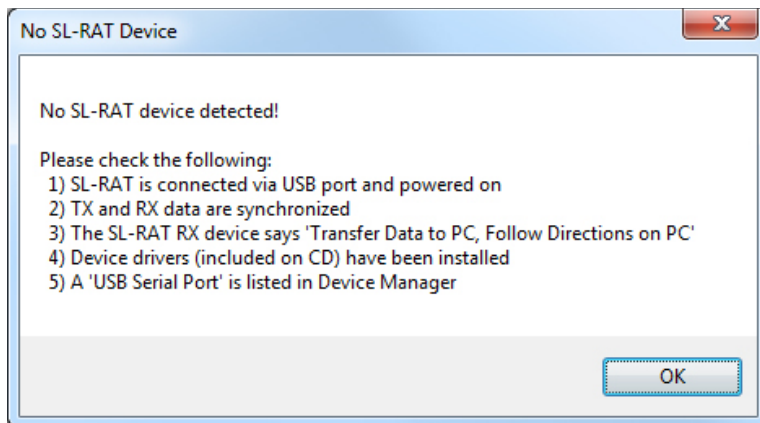


Run this program (with the SL-RAT RX unit connected and powered on).

You will see the following screen while the software checks for an internet connection and looks for SL-RAT devices:

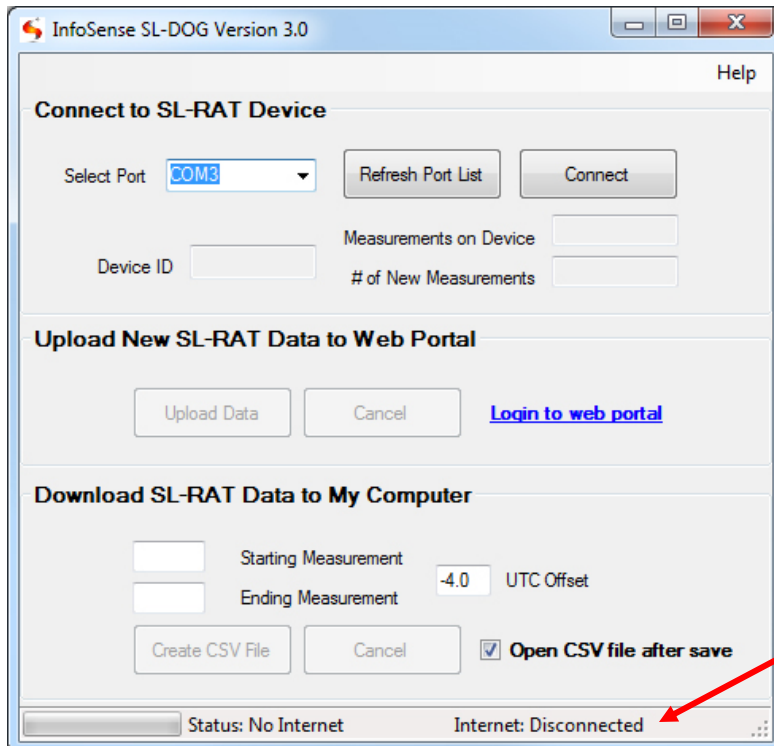


If the software cannot find an SL-RAT device, you will see the following:



Follow the steps described in the above window to make sure that the software can see the SL-RAT.

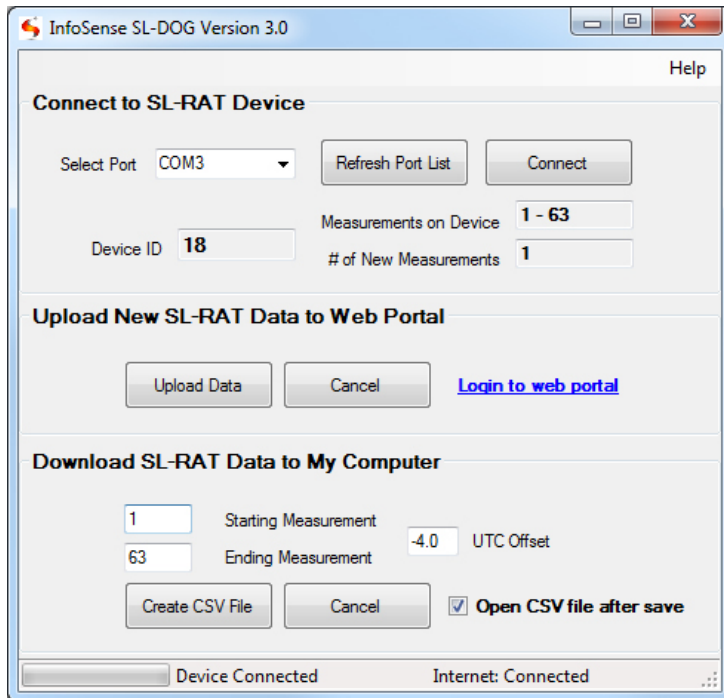
If there is no internet, the program will indicate this in the bottom right-hand corner.



## Step 5 – Communicate with SL-RAT, connect device to software

Choose a serial port from the “Select Port” field, and then hit the “Connect” button.

The SL-RAT device will communicate with the server, and determine what measurements are on the device. Once this happens, You should see the following screen:



## Step 6 – Download Data from SL-RAT

You can choose to obtain the data in two different ways:

### 1. Upload New SL-RAT Data to Web Portal

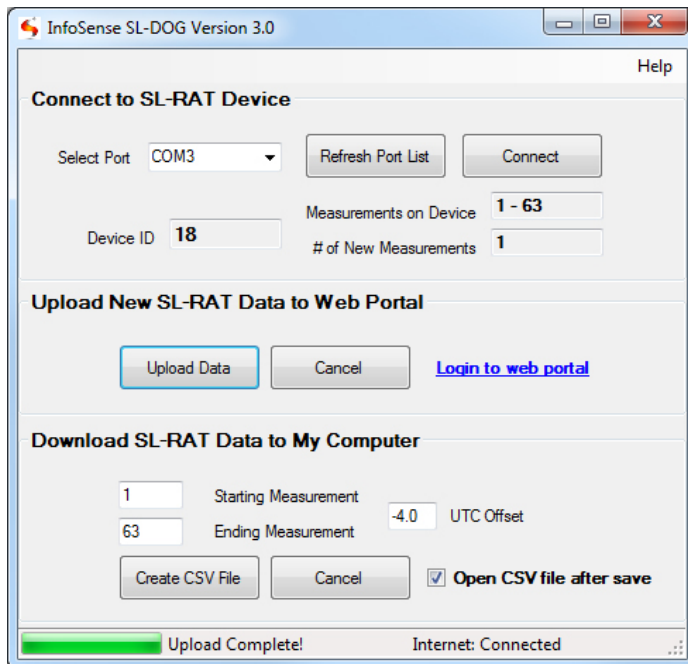
This option will upload any new measurements to the SL-DOG server. You can then access the uploaded measurements via the web portal at <http://www.sl-dog.com>

### 2. Download SL-RAT Data to My Computer

This option will create a CSV file of the SL-RAT measurements. You can only create a file from the measurements contained on the local device. When selecting this option, any new data will ALSO be uploaded to the web portal automatically, so there is no need to upload to the web portal if you select this option.

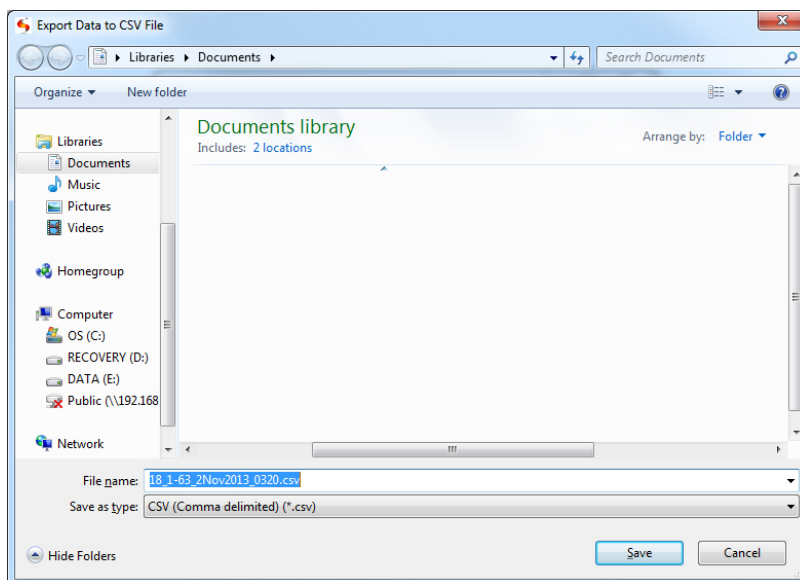
### *Option #1 – Upload New SL-RAT Data to Web Portal*

Click on the “Upload Data” button. The data will be uploaded to the server. When complete, you will see the following screen:



### *Option #2 – Download SL-RAT Data to My Computer*

Click on the “Create CSV File” button. Note that as part of this step, any new data are uploaded to the web portal, so it is not necessary to repeat that step if you want a CSV file and you use the web portal to access your data. The data will be downloaded to a CSV file. Once complete, you will be prompted to name the file.



You can rename the file and change its location using the above window.

Once the file is saved, if you left the “Open CSV file after save” box checked, it will open in the default program for that file type (usually Microsoft Excel). You will also see the following screen on the SL-DOG software:

InfoSense SL-DOG Version 3.0

Help

**Connect to SL-RAT Device**

Select Port: COM3 Refresh Port List Connect

Device ID: 18 Measurements on Device: 1 - 63 # of New Measurements: 1

**Upload New SL-RAT Data to Web Portal**

Upload Data Cancel [Login to web portal](#)

**Download SL-RAT Data to My Computer**

1 Starting Measurement 63 Ending Measurement -4.0 UTC Offset

Create CSV File Cancel ☒ Open CSV file after save

CSV File Saved Internet: Connected

You have now completed all the steps necessary to connect and download data from the SL-RAT!



For technical support, contact your local sales representative, call InfoSense directly at 877-747-3245 ext.5 or send an email to [sl-dog-techsupport@infosenseinc.com](mailto:sl-dog-techsupport@infosenseinc.com)